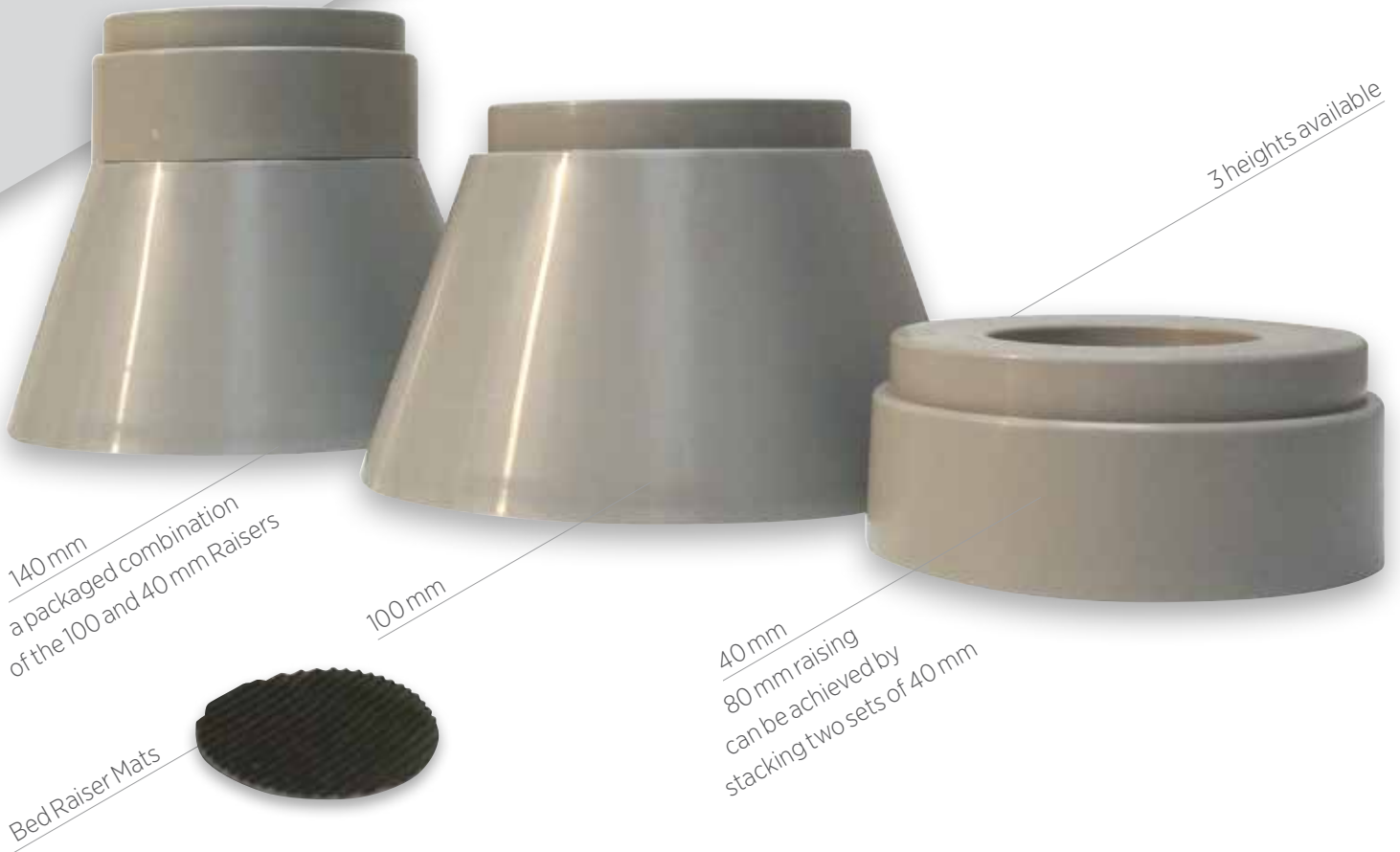


Elephant Feet Bed Raisers



Bed Raisers can be used to increase the height of a bed, lounge chair, couch or table, allowing you to match ideal user requirements for easy use and comfort.

Bed Raisers can also be used to raise one end of a bed, to create a slight incline, which can be helpful in the management of some digestive, respiratory and circulatory problems.

Constructed from durable, high impact plastic, these stackable bed raisers are available in 3 different heights. Furniture must be sufficiently heavy to remain stable on top of the raisers.

Designed to accommodate square and round furniture legs up to 65 mm in width (legs must fit inside the 'well' indentation in the top of each raiser).

For added stability and security, Bed Raiser Mats are also available (set of 4). These small rubber mats fit inside the well of the Bed Raiser to help reduce movement and offer added security.

Sold in sets of 4 (as required for most standard furniture) or individually. Set of four holds up to 250 kg (furniture and user inclusive).



Elephant Feet Bed Raisers

⚠ Safety First! Remember to assess each installation on a case by case basis. Bed Raisers are not always suitable.



Can be used with round legs, square legs and common sized castors



SINGLE ITEM CODE	BL1881	BL1898	BL1690	-
SET OF FOUR CODE	BL1882	BL1899	BL1691	BL5469
HEIGHT	40 mm	100 mm	140 mm (40+100mm)	
BASE WIDTH	125 mm	198 mm	198 mm	65 mm
CONFORMS TO	ARTG109857	ARTG109958	ARTG 109857 & ARTG 109958	ARTG133657
MATERIALS	Polypropylene			
WELL	65 mm diameter, 15 mm depth			
CAPACITY	250 kg (user and furniture inclusive)			
WARRANTY	1 year			